

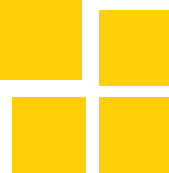
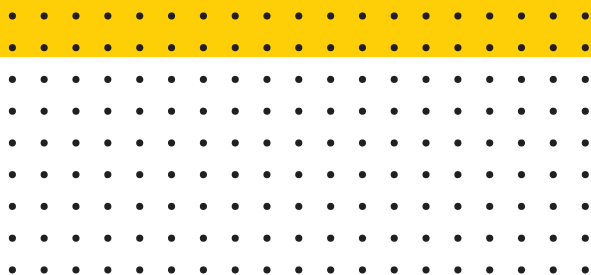


ESHWA
Electromechanical L.L.C



We Provide Quality Work & Qualified Labours

We provide quality of workmanship, flexibility and timely completion projects to the high standards



About us



ESHWA Electromechanical L.L.C is born to become one of the leading contracting firms in the United Arab Emirates. ESHWA is devoted to entering the new markets of prestigious projects and dedicated in becoming one of the leading contractors. Since it is a beginning of ESHWA, and despite of short period of working, ESHWA has been undertaking a prestigious electromechanical contract, including



Electrical System



ELV System



Fit Out Works



Plumbing - Water & Drainage System



HVAC System



HIGH QUALITY



AFFIRMATION



TEAM WORK

We Successfully
Completed More
Projects in

UAE



15%

Engineers

20%

Admin Staff

30%

Technicians

35%

Labors



MISSION



01

Since ESHWA opened officially, we strive to be the leader in our field by constantly testing the boundaries of what is possible in modern and high level of technology to apply in our field from all around the world.

VISION



02

We aim to become one of the markets developed and well known in Dubai in near future. This will be achieved through the used intelligent systems which will challenge the limits of construction speed and efficiency while maintaining a high level of safety.

COMMITMENTS



03

Satisfy the clients by providing:

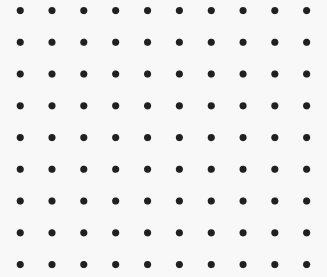
- ✔ **Competitive Price**
- ✔ **Quality of Works**
- ✔ **Safe Work Practices**
- ✔ **Completion Work on Time**

**“WE PROVIDE OURSELVES WITH
QUALITY LABOUR GIVING YOU
A QUALITY WORKS.”**

Why Choose Eshwa

BE PART OF ESHWA

Having ESHWA people worked with various clients, consultants and contractors on different projects, ESHWA has established for itself a reputation for quality workmanship, flexibility and timely completion of projects to the highest standards.



WHAT ARE THE DIFFERENT SERVICES ESHWA OFFERS

ESHWA has been undertaking a prestigious electromechanical contract, including Electrical, Plumbing, Fire Alarm &, Air Conditioning Works, Temporary MEP Works, Telephone, CCTV, Building Management System & all kinds of Civil works.

WHAT DOES ESHWA BELIEVES

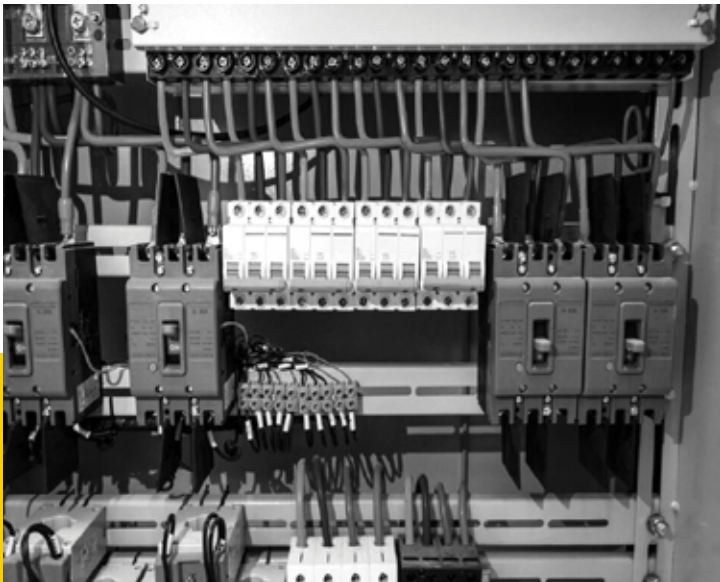
ESHWA believes that superior responsiveness to customer needs is the hallmark, ESHWA management; engineers and supportive staff take a special pride in their ability to serve clients in an efficient, individualized and effective manner.

HOW ESHWA APPROACHES

Everyone at ESHWA Contracting believes that engineering is a service business, with each project being approached with a high degree of professionalism by every one of its employees.

Services | Scope of Activities

ESHWA activities include project management, supply, installation and maintenance of ELV electrical works (lighting, power generation system, earthing and lightning protection, UPS system, sub - stations, auto Transfer switches, AV/IT systems and security systems), Plumbing works (water supply + drainage works), Air Conditioning & Ventilation Works.



ELECTRICAL SYSTEM

Complete electrical components supply & installations for high rise commercial / industrial and residential buildings, hotels, industrial complexes, warehouses, luxury villas, etc.

Installation & Testing and commissioning of L.V switchgear, diesel generating stations, motor control centre and specialized panels. Installation and testing & commissioning of streetlights. H.V / L.V cable installation works & Cable Tray, Trunking etc.

Erection and commissioning of LV switchgears (MDB, SMDB, MCC, EMCC & FDB).

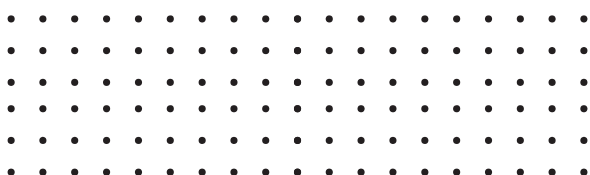
ELV SYSTEM

SMATV, Telephone, Access control system, CCTV system, Gate barrier system, BMS system, intercom system, facade lighting and lighting control system

Pre-wiring and termination of cable at each location specified at the apartment.

Maintenance of the distribution network, components, and cabling.

Testing and Commissioning



PLUMBING - WATER & DRAINAGE SYSTEM

Supplies and Installation PPR pipes, drainage pipes for commercial, residential and villas.

Installation of supply water pumps, booster pump, pressurization unit and sump pumps.

Installation of Water meters as per the authority approval.

Testing, Programming and Commissioning.



HVAC SYSTEM

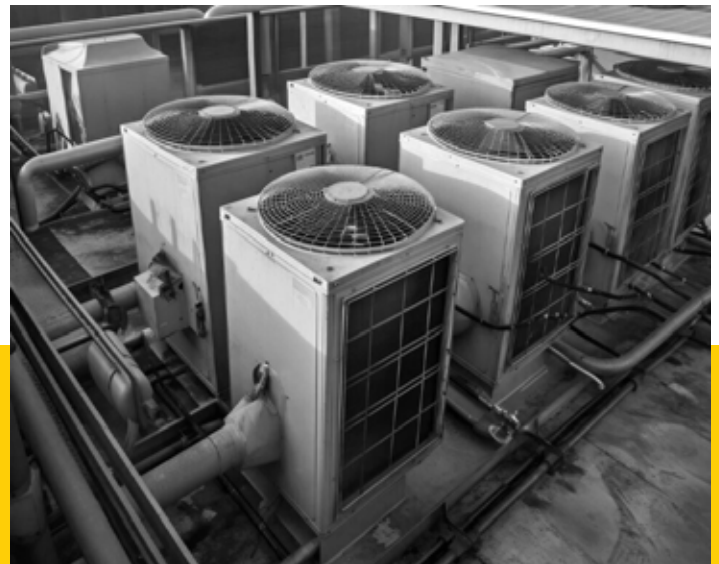
Supplies and Installation of HVAC System to comply with the new and modification of Ceiling Exiting and New Design.

Supply and installation of GI & pre insulated ducts with air balancing.

Installation of MSFD, VCD and integration with BMS system.

Installation of FCU, Outdoor units, AHU etc.,

Containment and wiring for Thermostat.



FIT OUT WORKS

Looking for top-notch fit-out works for your in Dubai? Look no further than our experienced team of professionals. We specialize in providing customized fit-out solutions to our clients

Obtaining DEWA approval and additional load as per the requirement

Preparing and submission of drawings for DEWA approval



ESHWA
Electromechanical L.L.C



Office No. 201, Prakash
trading building, Al Quoz - 3,
Dubai, UAE



+971 43399177, 052-6791945



info@eshwaelectromechanical.com